

Friday, March 30 continued

2:00 p.m.

Breakout Sessions: Choose one

- Overcoming Professional Burnout while Working with Persons with Brain Injury**
Robert Karol, PhD, LP, ABPP, CBIST
- Describe the nature of burnout and the factors that contribute to burnout
 - Explain steps to address burnout

What a Headache!

- Kilee R. Oetjen, PT, DPT, ACBIS, CPST, Physical Therapist at The Alexis Verzal Children's Rehabilitation Hospital at Madonna Rehabilitation Hospital, Lincoln, Neb.
- Recognize causes of headache symptoms following TBI
 - Formulate treatment strategies for reduction of headache symptoms following TBI

Substance Abuse and Brain Injury

- Christy Klein, MEd, LADC, LIMHP, Therapist with Family Resources of Greater Nebraska in Grand Island, Neb., and Louise Jacobs LICSW, Licensed Independent Clinical Social Worker with Louise Jacobs, PC in Hastings, Neb.
- Identify the impact of the interface of brain injury and substance use/abuse
 - Discuss resources and support systems for the individual with brain injury and substance abuse

3:00 p.m.

Break

3:15 p.m.

Breakout Sessions: Choose one

Emotional Rehab: The Process of Acceptance

- Laura Bergevin, MSW, Dimension Three Specialist with Quality Living, Inc., Omaha, Neb.
- Conceptualize "acceptance" as a process versus a finite destination and identify key elements of this process
 - Explore techniques and strategies to help navigate through the acceptance process toward a path of hope and optimism

The Aging Brain

- Dennis Molfese, PhD
- Discuss the changes in the ability to support thinking and the differences between the sexes
 - Relate how to maximize brain performance

Navigating Relationships After Brain Injury: Things the GPS Won't Tell You!

- Ben Woodworth, MSW, Director of Training for Iowa Association of Community Providers in Urbandale, Iowa and David Johnson BA, a survivor of a traumatic brain injury
- Examine the impact brain injury may have on personal and family relationships/systems
 - Identify role changes in relationships and strategies for helping to navigate change after brain injury

4:15-4:30 p.m. **Evaluations and wrap-up**

NEW THIS YEAR: Keeping it GREEN! Printed handouts will not be provided at the conference, but will be available online as they become available at: www.biane.org/conference.

Exhibitors Sign Up Today!

Agencies, businesses and organizations are invited to exhibit at the conference. This is an excellent opportunity to connect with the 300 participants-individuals with brain injury and their family members, caregivers and professionals. For more information, contact Cindy Christ at 402-304-8103.



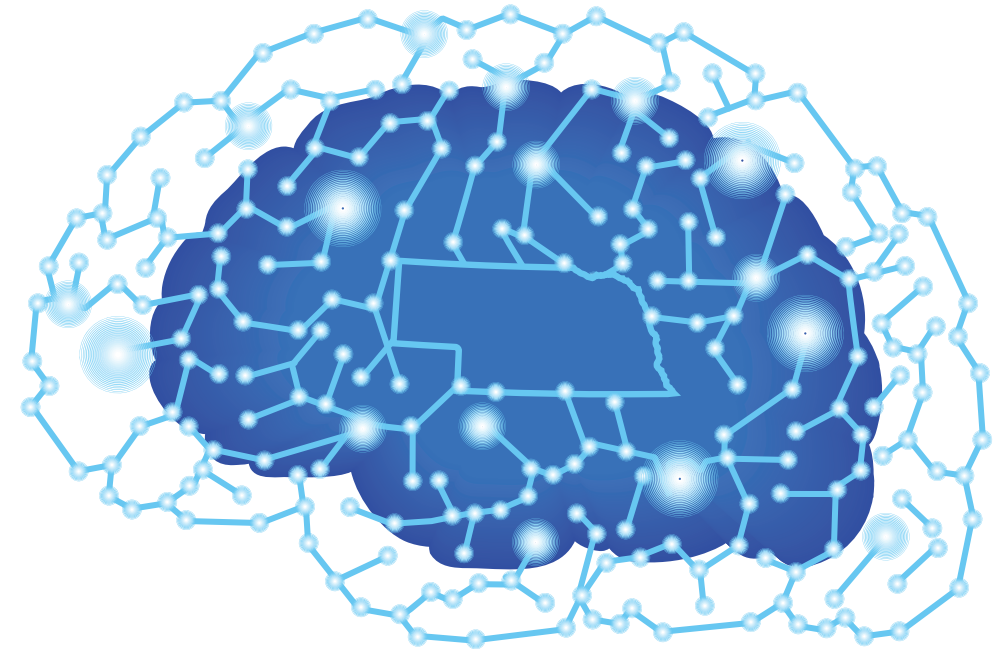
For more information about the conference: Peggy Reisher at (402) 890-0606

www.bianebraska.com

www.braininjury.ne.gov

www.madonna.org

6th Annual Nebraska Brain Injury Conference



March 29-30, 2012

Younes Conference Center
416 Talmadge Rd.
Kearney, Nebraska

Registration deadline: March 23, 2012

SAVE! Early bird registration postmarked or online by February 14, 2012

Conference Purpose: Discuss therapeutic strategies and resources available to assist individuals with traumatic brain injury and their families.

Conference arranged and supported by:



Nebraska Traumatic Brain Injury
Advisory Council

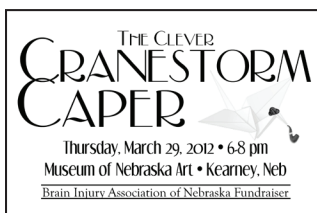
Co-provided by:



Conference supported in part by TBI Implementation Partnership Grant #H21MC06758 from the U.S. Department of Health and Human Services (HHS), Health Resources and Services Administration (HRSA), Maternal and Child Health Bureau (MCHB).

- 12:00 p.m. Registration check-in**
Thursday lunch is not provided at the conference. The Holiday Inn restaurant, located next to the Younes Conference Center, will be open for lunch or there are several fast food options nearby.
- 1:00 p.m. Welcome:** Tiffany Armstrong, MSN, RN, CRRN, Traumatic Brain Injury Advisory Council Chair
- 1:15 p.m. Keynote: Behavior Issues Following a TBI**
- Identify behaviors that are common following a traumatic brain injury
 - Create strategies for assessment and managing problematic behaviors following a traumatic brain injury
- Linda R. Wilkerson, MEd, CBIST is the CEO for Minds Matter, LLC, in Overland Park, Kan., where she provides training and consulting to support the needs of staff and agencies working in the community with individuals with disabilities. She is a state and national speaker on the topics of behavior management and traumatic brain injury.
- 2:45 p.m. Break**
- 3:00 p.m. Keynote: What Do We Do Now?**
- Explain the post-acute rehab experience
 - Describe the crushing toll of brain injury on families
- Joan Ryan, BS, is an award winning journalist with 20 years of experience as a newspaper columnist and author of three books. Her most recent book, *The Water Giver: The story of a mother, a son and their second chance*, is an account of her 16-year-old son's brain injury and what it taught her about motherhood. She lives in Ross, Calif., and is a media consultant for the San Francisco Giants and is writing a baseball book for Simon & Shuster.
- 4:00 p.m. Break**
- 4:15 p.m. Breakout Sessions: Choose one**
- Journaling Your Experiences**
Joan Ryan, BS, Author
- Discuss the value of journaling as a coping tool after a brain injury
 - Examine the therapeutic use of journaling for the brain injured individual
- Nebraska Medicaid Updates**
Susan Buettner, JD, Nebraska Deputy Director of Medicaid and Long Term Care
- Review programs available for individual assistance
 - Relate information about ADRC and Medicaid Waiver programs
- Veteran Reintegration**
Travis Karr, BA, Veteran Student Coordinator for Central Community College, Grand Island, Neb.
- Examine the profile of the veteran
 - Report issues of transition after deployment
- 5:15 p.m. Adjourn for the day**

6-9 p.m. Brain Injury Association Dinner & Fundraising Event: The Clever Cranestorm Caper
Museum of Nebraska Art, Kearney, Neb.



You may have seen the Amazing Race, but you haven't seen the biggest adventure event of them all – **The Clever Cranestorm Caper!** This exciting evening will raise your spirits while raising much needed funding for the Brain Injury Association of Nebraska.

Cranestorm Quiz: How will YOU participate?

- A. As a team member! I want to take on other teams and prove my Cranestorm prowess.
- B. As a sponsor! I want to support BIA-NE and cheer on my team or individual.
- C. As a spectator! I want to be a part of the fun and enjoy dinner and the cash bar.

Whether your answer is A, B or C, you'll find the details and registration at www.biane.org/fundraiser. Time is running out! Register now before you're voted off the island (wait, different program).

- 7:30 a.m. Registration**
- 8 a.m. Welcome:** Tiffany Armstrong, MSN, RN, CRRN, Traumatic Brain Injury Advisory Council Chair
AACBIS update by Judy Harvey, MS, CCC, SLP, Madonna Rehabilitation Hospital
- 8:15 a.m. Keynote: Resolving How to Conceptualize Disability After Brain Injury**
- Describe considerations that make finding a satisfactory self concept difficult
 - Examine variables that can enhance self concept
 - Explain a model that can improve self concept
- Robert L. Karol, PhD, LP, ABPP, CBIST, is the president of Karol Neuropsychological Services and Consulting in Minneapolis, Minn. He is board certified by the American Board of Professional Psychology as a rehabilitation psychologist, and is certified by the Academy of Certified Brain Injury Specialists as a certified Brain Injury Specialist Trainer. Dr. Karol has authored three books and has presented more than 170 workshops, keynote addresses, seminars and lectures. He is the co-founder of the Brain Injury Association of Minnesota and served for six years on the Board of Directors of Accessible Space, Inc.
- 9:45 a.m. Break/Snack, check out of hotel**
- 10:15 a.m. Nebraska Sports Concussion Bill:** Kate Jerecke, BIA-NE Executive Director
- 10:30 a.m. Keynote: Sports Concussion**
- Recognize the conflict of ego and safety in athletes
 - Compare strengths and weaknesses in the evaluation techniques for concussion and the future of concussion research
- Dennis Molfese, PhD, is an internationally recognized expert on the use of brain recording techniques to study the emerging relationships between brain development, language and cognitive processes. He received his a PhD in psychology from Pennsylvania State University. He is a chancellor's professor, director of the Brain Imaging Center at the University of Nebraska-Lincoln (UNL) and director of the Developmental Neuroscience Laboratory at UNL. He is the editor-in-chief for the scientific journal, *Developmental Neuropsychology*, and serves on the editorial boards for the Annals of Dyslexia, and for Eye and Brain.
- 11:30 a.m. Breakout Sessions: Choose one**
- Changing Relationships: Helping Families Cope With the Change and Loss After a Brain Injury**
Heidi Smith, BA, CBIS, Director of Services for People with Disabilities with the Lutheran Service in Des Moines, Iowa
- Identify the different behaviors of families coping with brain injury
 - Review techniques for helping families cope with brain injury
- Employment Resources - Who Can Help?**
Becki Koehler, MS, Business Development Manager for Goodwill Industries, Hastings, Neb.
- Cite Employment Services in Nebraska
 - Evaluate work support programs that help people who receive Social Security disability benefits
- Limitations of the Criminal Justice System and the Brain Injured Individual**
Christopher Ferdico, JD, Litigation Partner for Baylor, Evnen, Curtiss, Gruit & Witt, LLP in Lincoln, Neb.
- Review the criminal justice system
 - Discuss the interplay between the justice system and brain injured individuals
- 12:30 p.m. Lunch**
- Nebraska Traumatic Brain Injury Advisory Council update, Keri Bennett
 - Brain Injury Association of Nebraska annual meeting and awards ceremony, Kate Jerecke

2012 Nebraska Brain Injury Conference Registration

March 29-30, 2012 • Kearney, Nebraska

Registration deadline: March 23, 2012

Early bird special rate: postmarked or paid by February 14, 2012

- Register online using Visa or MasterCard at bit.ly/biconf12
- Register by mail (complete this form for each person attending), make checks payable to Madonna Rehabilitation Hospital and mail to: Madonna Rehabilitation Hospital, Education Department, 5401 South Street, Lincoln, NE 68506
- Register by faxing registration form using Visa or MasterCard to 402-486-8381

Cancellations may be made up to 4 days prior to the event. Refunds will be decreased by \$35 for administration fees. If you wish to have someone attend in your place, please notify Marcie Stoner at 402-483-9550.

<table style="width: 100%; border-collapse: collapse;"> <tr> <td style="width: 25%;">I am:</td> <td style="width: 25%;">Registration</td> <td style="width: 25%;">Early bird</td> </tr> <tr> <td><input type="checkbox"/> General/Professional</td> <td style="text-align: center;">\$150</td> <td style="text-align: center;">\$135</td> </tr> <tr> <td><input type="checkbox"/> Individual with brain injury or family member</td> <td style="text-align: center;">\$50</td> <td style="text-align: center;">\$45</td> </tr> <tr> <td><input type="checkbox"/> Additional family member or caregiver</td> <td style="text-align: center;">\$35</td> <td style="text-align: center;">\$30</td> </tr> <tr> <td><input type="checkbox"/> Student</td> <td style="text-align: center;">\$25</td> <td></td> </tr> </table> <p><i>Fee includes all breaks and lunch on Friday. Note: There is no breakfast on Friday.</i></p> <p>Payment must accompany registration unless arrangements were made for organization direct bill through Marcie Stoner 402-483-9550.</p>	I am:	Registration	Early bird	<input type="checkbox"/> General/Professional	\$150	\$135	<input type="checkbox"/> Individual with brain injury or family member	\$50	\$45	<input type="checkbox"/> Additional family member or caregiver	\$35	\$30	<input type="checkbox"/> Student	\$25		<p>I will attend: *Fee is the same for 1 or 2 day attendance.</p> <p><input type="checkbox"/> Thursday, March 29, 2012</p> <p><input type="checkbox"/> Friday, March 30, 2012</p> <p><input type="checkbox"/> Both March 29 & 30, 2012</p> <hr/> <p>Amount of registration \$ _____</p> <p><input type="checkbox"/> Check enclosed</p> <p><input type="checkbox"/> Bill my organization</p> <p><input type="checkbox"/> Credit Card <input type="radio"/> Visa <input type="radio"/> MasterCard</p> <p>Card # _____</p> <p>Expiration Date: _____</p>
I am:	Registration	Early bird														
<input type="checkbox"/> General/Professional	\$150	\$135														
<input type="checkbox"/> Individual with brain injury or family member	\$50	\$45														
<input type="checkbox"/> Additional family member or caregiver	\$35	\$30														
<input type="checkbox"/> Student	\$25															
<p>_____ Name</p> <p>_____ Address</p> <p>_____ Phone</p>	<p>_____ Organization (if professional)</p> <p>_____ City/State/Zip</p> <p>_____ Email</p>															

Need assistance to attend the conference? Individuals with brain injury and limited income, who cannot attend the conference without support, may request assistance. Contact the Brain Injury Association at 402-423-2463 before March 15, 2011. Scholarships are available, as funding permits, to assist with registration, hotel and mileage.

Conference Location/Lodging: **Wingate Inn:** 308-237-4400 **Hampton Inn:** 308-234-3400 (attached to conference center)
 The conference is held at the Younes Conference Center at 416 Talmadge Road in Kearney, Neb. It is located directly behind the Holiday Inn at the first intersection north of I-80. (Map at www.biane.org/conference) Lodging is not covered in the registration fee. Participants must make their own hotel reservations at the Wingate Inn or Hampton Inn for \$79.95. *Remember to mention you are with the Brain Injury Conference.* Both hotels provide hot, full breakfast for paying guests and several all-accessible rooms.

Contact Hours: Conference co-provided by Madonna Rehabilitation Hospital, Nebraska Traumatic Brain Injury Advisory Council and the Brain Injury Association of Nebraska.

Hours are targeted for Nurses, Social Workers, Occupational Therapists, Physical Therapists, Mental Health Practitioners, Speech Language Pathologists, Educators, and Vocational Rehabilitation Counselors.

- 3.5 contact hours provided for Thursday, March 29 - NE11-14H38-195
- 5.75 contact hours provided for Friday, March 30 - NE11-14H38-196

Madonna Rehabilitation Hospital will issue contact hours for those attending the professional tract and full day attendance. For more information on contact hours, contact Cinda Zimmer at 402-483-8279.

- The planners and presenters of this educational activity have no real or perceived conflict of interest and will not discuss off-label (non-FDA approved) uses of products during the presentation.
- The provision of continuing education hours does not imply that Madonna Rehabilitation Hospital, Nebraska Nurses Association or the American Nurses Credentialing Center's Commission on Accreditation approve or endorse any commercial product in connection with the education activity.

Madonna Rehabilitation Hospital is an approved provider of continuing nursing education by the Nebraska Nurses Association, an accredited approver by the American Nurses Credentialing Center's Commission on Accreditation.